



SERIE 037 ■

PNEUMATIC COUPLINGS  
PNEUMATISCHE KUPPLUNGEN



**Interchangeability - Kompatibilität**  
US-MIL-NORM C4109 1/2", GROMELLE 1300,  
HANSEN 5000, RECTUS 37

**Temperature Range - Temperaturbereich**  
-20°C +100°C (-4°F +212°F)

**Working Pressure - Betriebsdruck**  
0 - 35 bar (0 - 508 PSI)

**Flow capacity - Nennweite**  
NW - 11

**Option - Optionen**

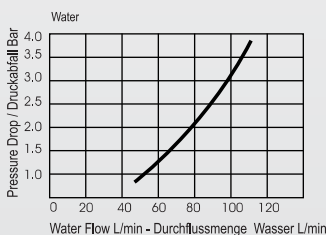
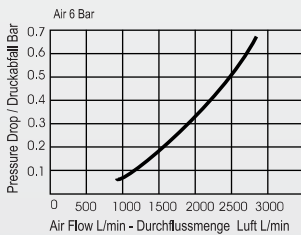
- F - Straight through flow - ungehinderter Durchfluss
- N - Nickel plated - vernickelt
- V - Viton Seal - Viton Dichtung

For optional orders please add the symbol of your option end of the order no.

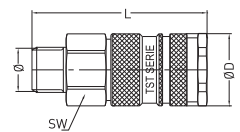
Bei Optionsbestellungen Kennbuchstabe bitte hinzufügen (Beispiel: 037 EG 13-K-V)

**Material - Material**

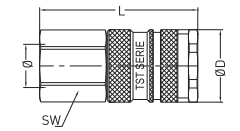
- Coupler Body - Kupplungsgrundkörper: Brass - Messing
- Sleeve - Hülse: Brass - Messing
- Valve - Ventil: Brass - Messing
- Springs - Federn: Stainless Steel - Edelstahl
- Locking O-Ring - Sprengring: Stainless Steel - Edelstahl
- Pims - Steifte: Stainless Steel - Edelstahl
- Seals - Dichtungen: Nitrile (Ni) - NBR (Ni)
- Plug - Nippel: Steel Hardened & Nickel plated - Stahl gehärtet und vernickelt



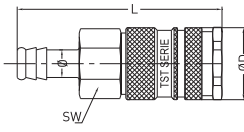
**Couplers and Plugs  
Kupplungen und Nippel**



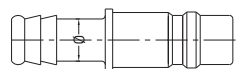
Male Threaded Coupling  
Kupplung mit Aussengewinde



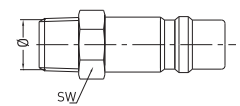
Female Thread Coupling  
Kupplung mit Innengewinde



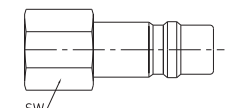
Standard Hose Barb Coupling  
Kupplung mit Schlauchtülle



Standard Hose Barb Plug  
Nippel mit Schlauchtülle



Male Threaded Plug  
Nippel mit Aussengewinde



Female Thread Plug  
Nippel mit Innengewinde

Connection Anschlüsse	Order No Bestellnr.	SW	L	ØD
BSP 3/8"	037 EG 17	30	71	35
BSP 1/2"	037 EG 21	30	74	35
BSP 3/4"	037 EG 26	30	79	35
NPT 1/4"	037 TG 13	30	74	35
NPT 3/8"	037 TG 17	30	74	35
NPT 1/2"	037 TG 21	30	78	35
NPT 3/4"	037 TG 26	30	80	35
<hr/>				
NPT 1/4"	037 NG 13	30	73	35
NPT 3/8"	037 NG 17	30	73	35
NPT 1/2"	037 NG 21	30	77	35
NPT 3/4"	037 NG 26	32	84	35
<hr/>				
6 mm - 1/4"	037 HG 06	30	84	35
8 mm - 5/16"	037 HG 08	30	84	35
10 mm - 3/8"	037 HG 10	30	84	35
13 mm - 1/2"	037 HG 13	30	84	35
16 mm - 5/8"	037 HG 16	30	84	35
19 mm - 3/4"	037 HG 19	30	84	35
<hr/>				
6 mm - 1/4"	037 HU 06		60	17
8 mm - 5/16"	037 HU 08		60	17
10 mm - 3/8"	037 HU 10		62	17
13 mm - 1/2"	037 HU 13		62	17
16 mm - 5/8"	037 HU 16		62	18
19 mm - 3/4"	037 HU 19		62	21
<hr/>				
BSP 1/4"	037 EU 13	17	50	
BSP 3/8"	037 EU 17	17	51	
BSP 1/2"	037 EU 21	22	55	
BSP 3/4"	037 EU 26	27	59	
NPT 1/4"	037 TU 13	17	53	
NPT 3/8"	037 TU 17	17	53	
NPT 1/2"	037 TU 21	22	59	
NPT 3/4"	037 TU 26	27	62	
<hr/>				
BSP 1/4"	037 DU 13	17	48	
BSP 3/8"	037 DU 17	17	50	
BSP 1/2"	037 DU 21	24	53	
BSP 3/4"	037 DU 26	32	56	
NPT 1/4"	037 NU 13	17	52	
NPT 3/8"	037 NU 17	19	56	
NPT 1/2"	037 NU 21	24	61	
NPT 3/4"	037 NU 26	32	62	